



The Vision and Values
of
Wilmot Union High School

Celebrating 130 Years of Learning

August 2011



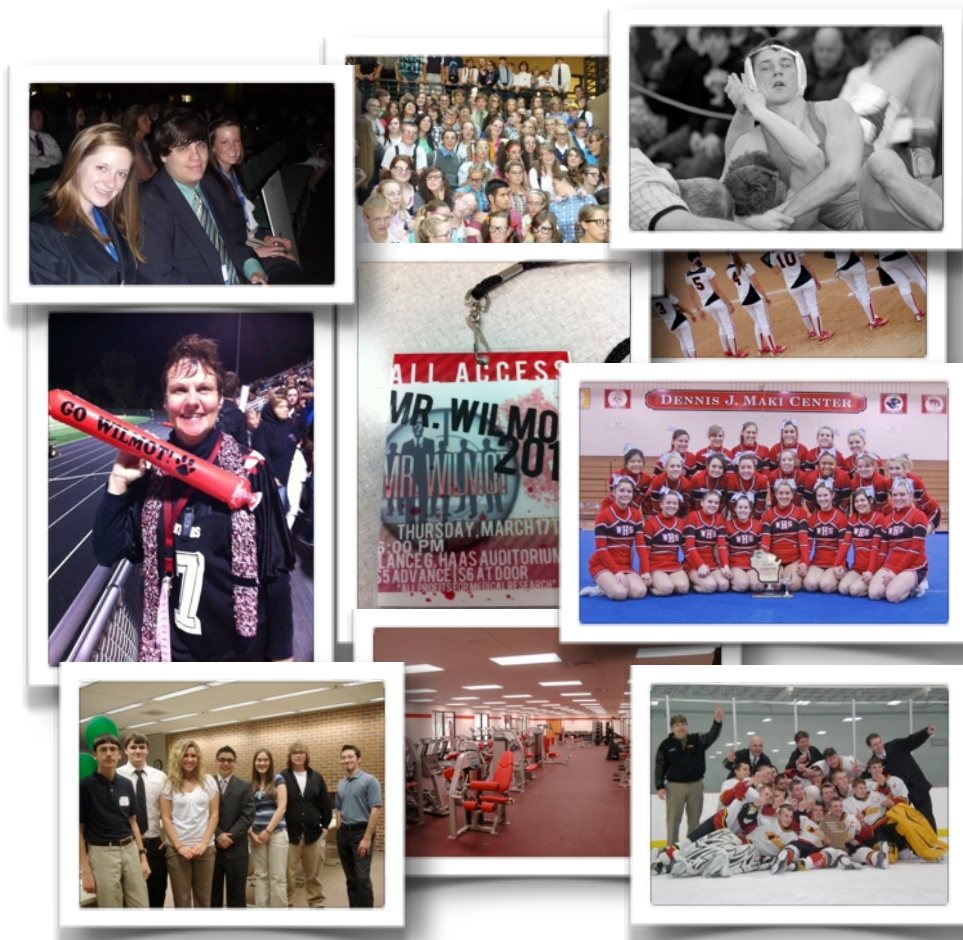
Preamble

As a learning community and through the leadership of the Academic Affairs Committee, Wilmot Union High School has developed a clear sense of who we want to become through a process where district stakeholders: students, staff, parents, community members, business partners, and Board of Education members came together and identified the key characteristics and values we want to exemplify. These characteristics and values were aligned under five pillars to further define the key areas of focus for our learning community.

It is through these five pillars and their guiding statements that WUHS and our stakeholders will empower one another to create and fulfill the goals and commitments that will bring our vision to fruition. We invite every stakeholder of the WUHS learning community to enter in to this process of adopting the defined values to fulfill our vision of an exemplary school.

Sincerely,

WUHS Academic Affairs Committee and The Administration of WUHS



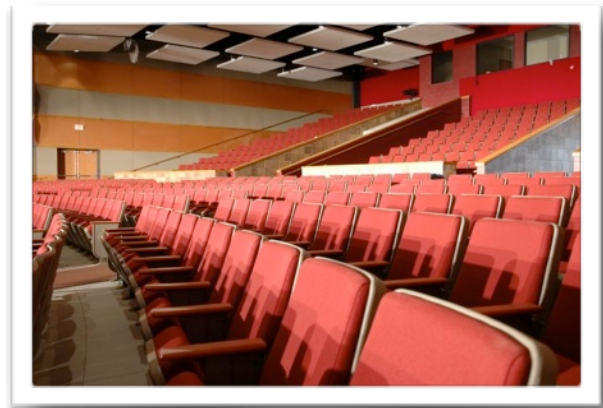


Vision Statement

Wilmot Union High School is a learning community in transition. To ensure that we move with purpose toward further success, the entire community, including all stakeholders, has established a clear vision of who we want to become as an exemplary school. We have identified the key characteristics and contributions we ask each community member to make to ensure we attain the vision we have created. The following vision statement sets forth the characteristics and standards, which Wilmot Union High School will strive to achieve and maintain.

I. **Safe and Supportive Learning Environment**

As a learning community, it is important to provide an environment that allows members to feel safe, secure and able to contribute. We strive to create an atmosphere that promotes growth, pride and community.



As a WUHS Learning Community:

- A. We will provide a well-designed, inviting, and highly maintained facility that reflects school pride and meets the needs of all members of the school community.
- B. We will provide a welcoming atmosphere, which promotes a sense of community, school spirit, mutual respect and high expectations. It will be a place where we can celebrate accomplishments, achievements and contributions, and where members and visitors feel welcomed and valued.
- C. We will create a positive learning environment where students feel comfortable and are willing to take risks in learning to reach their full potential.



D. We will maintain open and effective communication at all levels (district, building, classroom) using multiple methods that foster trust and support for staff, students, parents and community.

E. We will encourage respect for self and others by consistently holding people accountable for their actions.



II. **Equity and Access for All Students**

Our school program will be accessible to everyone so that students welcome and acknowledge diversity in order to live and work in a global society and economy. By opening our doors to the entire community and welcoming different experiences, backgrounds, and abilities we can enrich the whole child.

As a WUHS Learning Community:

- A. We will collaborate with feeder schools to ensure students are academically and socially prepared for high school.



- B. We will have high expectations and challenge all students by offering a wide variety of classes with updated technology and differentiated instruction.

- C. We will involve stakeholders in areas that promote sharing resources, experiences, accomplishments and achievements.

- D. We will engage parents so that they participate in determining their child's educational path.

- E. We will provide equal opportunities for students.

- F. We will promote respect, teach and celebrate diversity, and embrace individual differences.

III. **Community Partnerships**

As an exemplary learning community, we value collaborative relationships with and civic responsibilities to our extended community – families, residents, businesses, non-profit organizations and other educational institutions. We will create an environment where all stakeholders engage in a high level of participation and commitment to the school and community.

As a WUHS Learning Community:

- A. We will develop and offer student opportunities to participate in volunteer and community service experiences that authenticate their learning experiences and enhance their understanding of civic responsibilities.





- B. We will serve as a magnet to adult learners by providing educational opportunities and to all stakeholders by creating access to our facilities for community use.
- C. We will create partnerships with all areas of our community including schools, institutes of higher education, the business community and nonprofit organizations to help us strengthen our school's mission of college, career and civic readiness.
- D. We will support the school, the business community and other organizations by providing collaboration and authentic learning experiences for students, staff, and adult learners, which reinforce our academic and co-curricular programs.
- E. We will celebrate and acknowledge the positive achievements of our staff, students and community.



IV. Collaborative Culture For Learning

A highly effective learning community functions on the foundation that success for every student is dependent upon the people within the organization. Our learning community creates a safe, student-centered environment and fosters a culture which expects collaboration as we strive for greatness. Therefore, we are committed to recruiting, developing, and retaining professionals with exceptional expertise and an unwavering commitment to student achievement.



As a WUHS Learning Community:

- A. We will develop a solution-based environment that involves all stakeholders and fosters a safe and positive culture for expression and learning.
- B. We will support people, programs, and a culture of high expectations.
- C. We will commit to an environment which embraces diverse ideas, celebrates success, and uses failures as a source of learning.



- D. We will build trust through creating and sustaining good relationships and modeling behaviors that we value.
- E. We will work collaboratively with the community to ensure we invest in our collective future.
- F. We will allocate funds to provide students and staff with the resources and training necessary to be competent and successful in the twenty-first century.
- G. We will commit to allocating time and resources for staff collaboration that focuses on best practices in education to support student learning.

V. **Curriculum, Instruction, and Assessment**

Our learning community provides students with a common curriculum as well as a variety of elective courses and co-curricular activities to meet the individual needs of students. This balanced program challenges students to demonstrate they have learned how to learn, empowers them to develop into productive and responsible citizens, and promotes life long learning. Desired student outcomes are articulated, and student attainment of those outcomes are continually monitored and assessed through a variety of indicators which drive curricular change and instructional practice.

As a WUHS Learning Community:

- A. We will include evidence-based best teaching practices, which empower students to become goal driven, self-sufficient learners with effective interpersonal and personal responsibility skills.
- B. We will provide curriculum, instruction, and assessment that empowers all students to do their best within a flexible environment.



C. We will incorporate instructional practices that encourage and promote the application of appropriate technology relevant to lifelong skills.

D. We will ensure formative and summative assessments are used and analyzed on an ongoing basis to drive curricular and instructional decision-making which promotes quality learning.

E. We will embrace a deeply aligned set of educational objectives, standards, curricula, assessments, interventions, and professional development, which ensure continuous improvement and feedback on instruction and student performance.