



Wilmot Union High School  
**WUHS TODAY**  
ISSUE 29 • DECEMBER, 2025



# WINTER BREAK

DECEMBER 22 - JANUARY 2  
SCHOOL WILL BE BACK IN SESSION  
ON JANUARY 5, 2026

VIEW THE LUNCH MENU HERE



**BOARD OF EDUCATION  
MEETINGS:**

**WORKING BOARD MEETING:**  
DECEMBER 8 - 4:30 PM

**REGULAR BOARD MEETING:**  
DECEMBER 17 - 6:00 PM

**VIEW THE BOARD OF  
EDUCATION AGENDA ON OUR  
WEBSITE.**

SIGN UP TO RECEIVE SMS ALERTS  
**JOIN OUR  
EMAIL LIST**

## TABLE OF CONTENTS

<a href="#"><u>Message from the DA • P. 2-3</u></a>
<a href="#"><u>Message from the Principal • P. 4-7</u></a>
<a href="#"><u>Message from the AP • P. 8-10</u></a>
<a href="#"><u>Winter Concerts &amp; Spring Musical • P. 11-13</u></a>
<a href="#"><u>Interior Design • P. 14</u></a>
<a href="#"><u>DECA • P. 15</u></a>
<a href="#"><u>HOSA • P. 16-17</u></a>
<a href="#"><u>Priceless Pancakes • P. 18</u></a>
<a href="#"><u>Go to Japan • P. 19</u></a>
<a href="#"><u>In The Know • P. 20</u></a>
<a href="#"><u>Family Support Community • P. 21</u></a>
<a href="#"><u>Message from Student Services • P. 22</u></a>
<a href="#"><u>Featured Resources • P. 23</u></a>
<a href="#"><u>Community Outreach • P. 24-25</u></a>
<a href="#"><u>Athletics &amp; Activities • P. 26-27</u></a>
<a href="#"><u>Newsletter Links • P. 28</u></a>

Dear Wilmot Community,

As we approach the winter holiday break, I want to take a moment on behalf of the Board of Education and the entire staff to extend our warmest wishes to all of our students, families, and community members. Moving into the New Year, it is amazing to reflect on all of the achievements our Panthers have accomplished so far.



Christy Weinstock  
District Administrator

***Here are just a few highlights of what we've accomplished:***

- We had a wonderful Fall Play production of 67 Cinderellas which had **over 800 visitors** attend.
- **100%** of our Certified Nursing Assistant Students **passed their clinicals**.
- Between our September 5th Football Game attendees and our Girls Volleyball team we brought **over 600 pounds of food donations for the Sharing Center**.
- Two of our **Cross Country** runners ran the **3rd and 6th fastest times** in Wilmot history.
- Our Building Construction 2 class **built garage walls for Habitat for Humanity homes** in Kenosha.
- The Wilmot Shooting Team had several **top 5 finishes** in the Fall Regional.
- We had a Boys Volleyball player receive an **Honorable Mention at All State**.

- Around **100 students** have been recognized with **Wilmot Way to Go's**.
- We are continuing to create **better academic supports** for all students as evidenced by the **increase of our Achievement measures in English Language Arts and Math** on the 2024-2025 state report card.



Christy Weinstock  
District Administrator

**We again thank our staff, families, and community for their dedication and partnership.**

**Have a wonderful holiday season!**

---

### **Construction Updates:**

Please continue to visit our website for construction updates, pictures, and timelines. Our **95% Design meeting with Nexus is December 16**. This means that the **design and planning process is close to complete!**

**[Community Referendum page](#)**

**[Back to Top](#)**



# Wilmot Academic Resource Period (WARP): Supporting Student Success

[Access the 2025-26 WARP Schedule Here!](#)



Rob Kreil  
Principal

At Wilmot Union High School, we are committed to providing every student with the tools, time, and support needed to thrive academically. One of the most valuable resources available to students is the Wilmot Academic Resource Period (WARP)—a dedicated intervention and enrichment block designed to help students stay on track, deepen their learning, and build confidence in their coursework.

## What Is WARP?

WARP is a structured academic support period where **students and teachers can request one another** to meet for extra help. Whether a student is struggling with a concept, preparing for a formative or summative assessment, or simply wanting to strengthen their understanding, WARP offers targeted time to get the assistance they need.

## Teachers May Also Use WARP To:

- Provide reteaching and remediation
- Offer enrichment opportunities
- Support students who need extra time or clarification
- Facilitate project work, test review, or skill-building activities



## How Students Can Make the Most of WARP:

To ensure each student receives the support they need, teachers will publish a **weekly WARP schedule every Friday** for both students and parents to review. This allows families to plan ahead and prioritize time wisely.



Rob Kreil  
Principal

## Here's How Students Can Utilize WARP Effectively:

### ✓ **Plan Ahead**

Review the WARP schedule each Friday. Identify classes where you may need additional help or where a summative assessment is coming up.

### ✓ **Be Proactive**

If you're struggling with coursework, don't wait—request your teacher through WARP before the week begins. This shows initiative and ensures you get the support you need.

### ✓ **Check SmartPass**

All students must select their WARP location in SmartPass by Monday during Homeroom. Making your selection on time guarantees you are where you need to be for support or enrichment.

### ✓ **Use the Time Wisely**

Arrive prepared—with notes, questions, or assignments. The more focused you are, the more helpful your time in WARP will be.

## ✓ Take Advantage of Enrichment

WARP isn't just for students who need extra help. Teachers also offer enrichment activities for students ready to extend their learning or explore topics in more depth.



Rob Kreil  
Principal

### Why WARP Matters:

Academic success is built on consistent effort and timely support.

### **WARP Ensures Students Have:**

- Time to ask questions they didn't get to in class
- A chance to review material before assessments
- Opportunities to catch up on missing or incomplete work
- Access to individualized help from teachers
- Space to build skills that support long-term academic growth

When used effectively, WARP empowers students to take ownership of their learning and stay on track throughout the school year.

***Together, we can ensure every student reaches their full potential.***

# **Exciting Opportunity with Gateway Technical College!**

We're thrilled to announce that Gateway has officially admitted this year's entire graduating class into the Fall 2026 Semester!

We chose to partner with Gateway for many reasons, including the college's solid reputation, 70+ degree programs state-of-the-art facilities, affordable tuition, scholarship opportunities, welcoming community and more.

**They are truly helping students bring their career dreams to life - and saving them valuable time and money too!**

**KEEP AN EYE OUT FOR AN OFFICIAL ACCEPTANCE  
LETTER COMING IN THE MAIL.**

If you have any questions in the meantime, reach out to Gateway New Student Specialist, Debby Joling, at 262-214-5654 or [jolingd@gtc.edu](mailto:jolingd@gtc.edu).





## Hello Panther Families and Community,

Thank you for your ongoing support of learning at Wilmot. Below are quick updates, celebrations, and resources from the realm of Curriculum and Instruction.



Don Norwick  
AP of C&I

### KEY DATES:

- If you were **not able to attend P/T Conferences in October**, it is never too late to **connect with teachers**. Please reach out directly if you have questions about your student's progress.
- First Semester ends on **January 27, 2026**. December is a great time for students to check in with teachers about reassessments, missing work, and next steps before we reach the end of the term.
- District Winter Break is coming later this month, **December 22nd - January 2nd**. Make sure your students are putting themselves in the best position possible to be successful in the new year. We will have 3 weeks left of the semester when they return in January.

### GRADES AND FEEDBACK:

- **Fall 2025 PreACT scores are now available in Skyward**, located in "Student Attachments," and in Otus in the "Reports tab". If you have any questions on how to access them or read the results, please reach out to Don Norwick.
- As we approach the **end of the semester**, remember that Otus is used to give a fuller picture of your students' learning. Otus shows performance on Essential Standards and recent evidence, while Skyward will only show the final course grades and credits earned (for transcript purposes).
- **Encourage your student to talk** with teachers about specific feedback in Otus rubrics and to use that information when they prepare for end-of-unit tasks and semester assessments.
- **Otus Support Videos**
  - [Video 1: How to create an Otus Account](#)
  - [Video 2: How to navigate the Otus Platform as a Parent](#)
  - [Video 3: Formatives and Summatives at Wilmot](#)
  - [Video 4: How to read the Otus Gradebook](#)
- **First Semester ends 1/27/26**
  - 6 "school" weeks left! (doesn't include breaks)

## STANDARDS-BASED LEARNING SNAPSHOT:

### • What Will You See In Your Student's Classes?

- "I CAN" statements and learning targets for each unit, so students know the purpose of every lesson
- Gradebooks are organized around Essential Standards rather than a long list of points or tasks
- Practice work (formatives) such as warm-ups, exit tickets, and homework that give feedback and do not carry heavy weight in the grade.
- Bigger checkpoint tasks that feel more like a scrimmage, where students put several skills together and get clear feedback before the final assessment.
- Summative assessments that ask students to show what they know on their own after teaching, practice, and support



Don Norwick  
AP of C&I

### • How Practice, Scrimmage, and Game work:

- **Practice is like formatives**
  - These are the daily reps. Students try new skills, make mistakes, and get coaching from the teacher. The main goal is learning, not the score.
- **Scrimmage is like a larger formative**
  - This is a more complete task that looks and feels closer to the real game or assessment. The teacher checks how students are doing, gives detailed feedback, and may reteach parts of the material. Students still have chances to adjust before the score really counts.
- **The Game is like the summative**
  - This is the moment when students show what they can do on their own. In a standards-based system, this evidence carries the most weight because it shows the student's current level of understanding after they have had time to learn and practice.

### • Why This Helps Students and Families:

- Students understand that early mistakes are part of learning, not a permanent hit to their grade
- Teachers can use practice and scrimmage work to decide who needs more support or a different approach before the summative
- Families can see which standards are secure and which still need attention, instead of guessing from a single test score
- Final grades tell a clearer story of what a student knows and can do at the end of the learning, not just how they did on the first try

## ADVANCED PLACEMENT CORNER

- AP exam ordering for first-semester AP classes has now been finalized. If you would still like to order an exam and missed the original window, the order can still be placed, but the College Board will include a \$40 late fee.
- Families should reach out directly to their student's AP teachers with any questions about course expectations, exam ordering, or study resources.



Don Norwick  
AP of C&I

## SPOTLIGHT ON A CLASSROOM

### Psychology with Ms White

Students in Psychology explored personality through a Myers-Briggs style inventory that blended clear, direct instruction with meaningful self-reflection. After reviewing key terms and definitions together, Ms White gave straightforward directions, and students quickly moved into taking the inventory on their Chromebooks and recording results in their notes, with everyone on task and engaged. Once students received their results, Ms White led a short debrief where they connected their profiles to course concepts and considered what the letters might suggest about how they learn and work with others. Students then compared patterns as a whole class, noticing trends, debating how accurate the results felt, and asking thoughtful questions. This extended conversation deepened their understanding of the personality inventory and made the activity feel authentic, relevant, and strongly connected to the real world.

## QUICK TECH TIP FOR FAMILIES

### Using Artificial Intelligence as a Study Buddy

Try using school-appropriate artificial intelligence tools at home as a study buddy, not as a shortcut. Sit with your student and type in a topic they are reviewing, then ask the tool to create a short quiz or practice problems, and have your student answer without looking at the suggestions. Encourage them to compare their work with the sample answers and talk through what they got right or need to review. **Remind your student that they should not copy and paste full assignments into a chat or turn in computer-generated writing as their own.** The goal is to use artificial intelligence to deepen understanding, ask better questions, and build confidence before they come back to class.



2025

# Wilmot High School Winter Band Concert

Wednesday, December 3rd  
7:00pm  
Lance G. Haas Auditorium  
for the Performing Arts



**All are invited** to join us for the annual Band and Choir Winter Concerts as we celebrate the holiday season with outstanding performances from our talented students!

- **Band Concert:** Wednesday, December 3
- **Choir Concert:** Wednesday, December 10
- **Time:** 7:00 PM
- **Location:** Lance Haas Auditorium for the Performing Arts

**BOTH EVENTS ARE FREE AND OPEN TO THE PUBLIC!**

We hope to see you there as we ring in the season with beautiful music!

[\*\*Back to Top\*\*](#)



A large, ornate golden treble clef is centered at the top, with several golden musical notes floating around it. The background is a deep red with a fine, sparkling gold texture.

*WILMOT HIGH SCHOOL*

*Choral*

*WINTER CONCERT*

*Lance G. Haas Auditorium*

Concert Choir • Treble Choir • Vocal Ensemble

***Wednesday, December 10<sup>th</sup>***

***7:00 pm***

No admission fee!

Don't miss this joyful night of music and holiday cheer!

For more information: [ivanj@wilmoths.k12.wi.us](mailto:ivanj@wilmoths.k12.wi.us)

A decorative golden border featuring intricate floral and scrollwork patterns, adorned with small stars and crescent moons, runs along the bottom and sides of the poster.



# SAVE THE DATE!

## LITTLE SHOP OF HORRORS

WILMOT HIGH SCHOOL

THURSDAY

MARCH 12<sup>TH</sup>

FRIDAY

MARCH 13<sup>TH</sup>

SATURDAY

MARCH 14<sup>TH</sup>

SUNDAY

MARCH 15<sup>TH</sup>



# Interior Design is BACK!

From candy color wheels to salt dough sculptures and dream bedrooms, our students have been busy bringing design concepts to life!

Our Students Are:

- Mixing color to create bold secondary & tertiary hues
- Applying their knowledge of tint, tone, and shade to their salt dough creations
- Using digital tools to design their own dream bedrooms!

**We're exploring color, shape, form, and design in the most creative ways—and having a blast doing it!**



[Back to Top](#)



# VOLUNTEERS NEEDED!

## BE A DECA JUDGE!

**No experience? No problem!** Students present a role-play scenario, and you **provide feedback to support their growth as future leaders.**

### Why help?

- Support local students in business & marketing
- Fun, rewarding, and inspiring day!
- More judges = smoother day for students and volunteers

**Date:** Saturday, December 13th

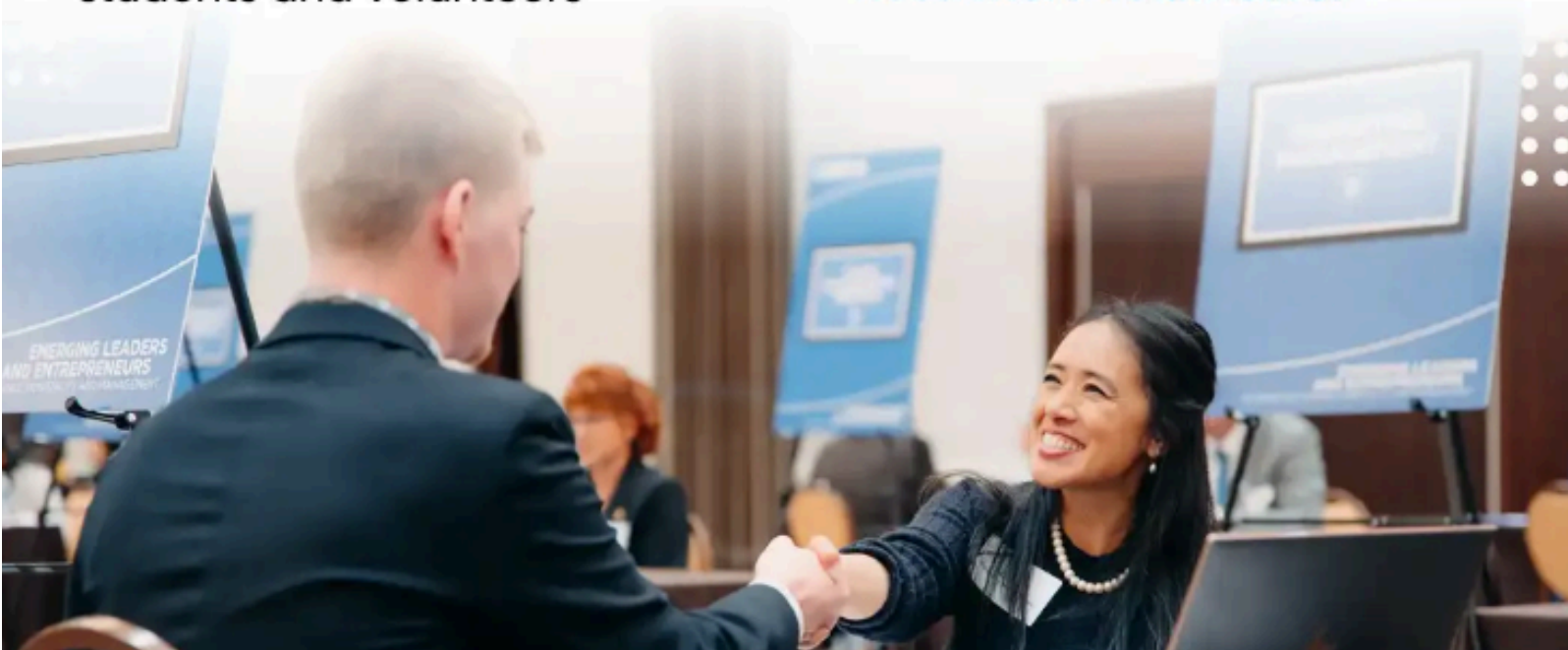
**Location:** Racine Case High School

**Time:** 8 am – 1 pm

**Sign up today and help make this event a success!**

[tinyurl.com/D6DECAjudge](https://tinyurl.com/D6DECAjudge)

***Every judge counts—we always need more volunteers!***





Wilmot HOSA-Future Health Professionals members attended the Wisconsin HOSA Fall Leadership Conference at Marquette University in November where they learned about competitive events (presented by Mrs. Joch), a variety of health careers, how a healthcare team operates through a patient case scenario, and how to develop their HOSA leadership skills.





# RLC JUDGES NEEDED



WI HOSA's Regional Leadership Conference is quickly approaching and we need your help!

Judging takes place virtually on **January 10<sup>th</sup> 2026**. Students will present their hard work on projects, presentations and ThingLinks. Judges will evaluate students based on rubrics provided.

To sign up or view the events available visit  
[www.bit.ly/46V8r7p](http://www.bit.ly/46V8r7p)

For more information or questions reach out to WI HOSA's Event Personnel Coordinator, Lauren Wagner, at [contactus@wihosa.org](mailto:contactus@wihosa.org)



# PRICELESS PANCAKES

Come for the Pancakes, eat cause they're free!



In the Commons across from the PAW

First Friday  
of Every  
Month

Begins Nov 7th!





# こんにちは! - KON'NICHIIWA!



## COME WITH US TO JAPAN!

Calling all travelers! Wilmot and Central High Schools are teaming up to take on Japan in the summer of 2028! From Kansai to Tokyo - tea, sushi, Mount Fuji and karaoke await! We'd love to have you on this incredible adventure!

This trip is open to ALL of our families! That means parents, students and relatives!



**INFORMATIONAL MEETING DECEMBER 10!**

**\$4,929, \$170/MONTH - ALL INCLUSIVE!**

**For more information, contact us or scan the QR Code!**

**Alyssa Ryan-White | Tyler Kochan**

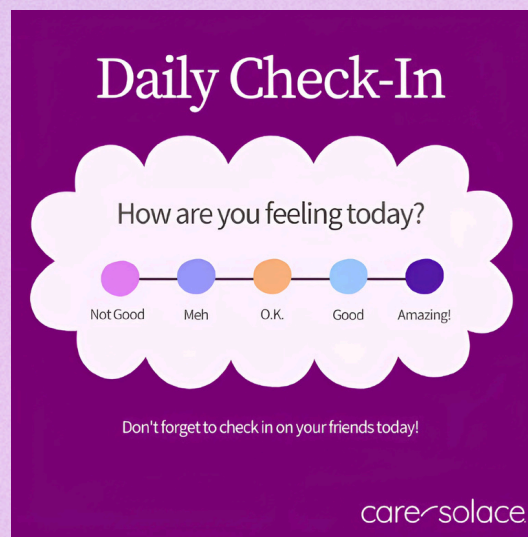
[whitealewilmoths.k12.wi.us](mailto:whitealewilmoths.k12.wi.us) | [kochant@wilmoths.k12.wi.us](mailto:kochant@wilmoths.k12.wi.us)

<https://www.eftours.com/tour-website/2762027CE>

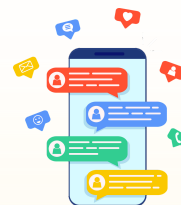
Wilmot Union High School is committed to the health, safety, and well-being of our students, staff, and families.

We are proud to announce our partnership with Care Solace to support our ongoing commitment. If you or a family member are looking for help with mental health or substance use, Care Solace will quickly connect you to community providers matched to your needs.

Call 888-515-0595 at any time or search on your own at [caresolace.com/wilmot](https://caresolace.com/wilmot).



## STAY IN THE KNOW WITH BRIGHTARROW!



We are using the BrightArrow system to keep you updated with urgent and important texts.

**Text YES to 79041 to opt-in TODAY.**

**Don't miss out—stay connected!**



**PARENT**  
**PANTHER**  
**NEWS**



**[Back to Top](#)**





# Family Support Community

*A monthly learning opportunity designed for families and other caregivers supporting a child(ren) with a disability. Our supportive community meetings provide valuable learning opportunities and mutual support.*



**The Family Support Community will meet September 2025-May 2026**  
All sessions will be held on Zoom; Sessions are NOT recorded

**2<sup>nd</sup> Wednesday of the month: 7:00-8:00 p.m.**  
**9/10, 10/8, 11/12, 12/10, 1/14, 2/11, 3/11, 4/8, 5/13**

**2<sup>nd</sup> Thursday of the month: 12:00 – 1:00 p.m.**  
**9/11, 10/9, 11/13, 12/11, 1/8, 2/12, 3/12, 4/9, 5/14**

The Family Support Community allows participants to engage in positive **problem solving** with others in a **solutions-based format**.

Meetings will allow for **networking, learning, and peer support**.

## Participants in this Community will:

- Grow networks through connection-building
- Build advocacy skills through shared learning
- Reflect on beliefs and practices around family engagement
- Boost confidence in working with schools and community partners

- There is no registration fee
- By registering for this community, it is implied that you will attend sessions on a regular basis.
- Zoom link will be sent one week prior to the scheduled meetings and in monthly email reminders.

[Click HERE to register](#)



Register Here

Find more events at:

[WSPEI Learning Opportunities](https://wspei.org)  
[wspei.org](https://wspei.org)

Contact us at:

[wspei@cesa12.org](mailto:wspei@cesa12.org) with any questions.

# A MESSAGE FROM STUDENT SERVICES

## Class of 2026

Now that many of you have decided where you are going to continue your education after Wilmot Union High School please look at the [\*\*scholarship bulletin\*\*](#) for great local scholarships. Also included are other resources such as UW school scholarship websites as well as private school scholarship information.

## Upcoming Field Trips: Scot Forge & Allied Plastics



**Allied Plastics: December 3rd**

**Scot Forge: December 18th**



*Permission slips are available with Ms. Montgomery in Student Services.*

**Open to Juniors and Seniors Only.**

Questions? See Mr. Richter.

**Counselors can be reached by clicking on their photo:**

## CONTACT US TODAY

CLICK ON OUR PHOTO TO SEND AN EMAIL DIRECTLY



JESSICA RUNTE  
SCHOOL COUNSELOR  
A-F



KRISTEN PYE  
SCHOOL COUNSELOR  
G-MA



KARL RICHTER  
SCHOOL COUNSELOR  
MB-SO



MELISSA SWEATMAN  
SCHOOL COUNSELOR  
SP-Z

[\*\*Back to Top\*\*](#)



## FEATURED RESOURCES

**Click on the WUHS logo below to visit our website!**



**Share a moment when a Wilmot staff member made a positive impact in your life by clicking on the photo below.**



**Don't miss out!  
Click the logo and  
follow our page  
for daily updates!**



**[Back to Top](#)**

# COMMUNITY OUTREACH

**BECOME A FITNESS  
CENTER MEMBER  
TODAY!**



**SCAN ME**



<b><u>Membership Pricing</u></b>	<b><u>Resident / Senior Citizen (55+)</u></b>	<b><u>Non-Resident</u></b>
Family Annual Membership (2+)	\$180	\$250
Individual Annual Membership	\$100	\$180
Individual 6 Month Membership	\$50	\$100
Individual Monthly Membership	\$10	\$15
College Student Annual Membership	\$35	\$35
Wilmot UHS & Feeder School Retiree Membership	\$35	\$35
1-Day Pass	\$5	\$5
WUHS Student, Employee & Spouse, Feeder-School Employee, First Responder	FREE	FREE

**[Back to Top](#)**





**WILMOT PANTHERS  
BASEBALL PRESENTS:**

# **CALEB DURBIN'S YOUTH BASEBALL CAMP**

**SATURDAY  
DECEMBER 6TH  
1:00PM – 3:00PM**

**LOCATION:  
WILMOT UNION  
HIGH SCHOOL'S  
FIELD HOUSE**

**FOR BOYS & GIRLS GRADES 4TH-8TH**

**SCAN THE QR  
CODE FOR MORE  
DETAILS!!!**



# POWERLIFTING CLUB



Powerlifting Club at Wilmot is officially up and running, with **practices beginning this week and continuing through March, 2026.**

Lifters will have chances to compete at regional meets about once a month, starting with a local competition on December 14 at Elkhorn. These meets can lead to qualifying for the **state competition and even nationals.**

Powerlifting is a very positive, empowering sport for both males and females and welcomes all types of students, even those who choose not to compete.

**No experience is necessary to get started!**

*If you are still interested in joining,  
please contact Coach Norwick.*





**BUY YOUR SEASON PASSES OR  
INDIVIDUAL TICKETS ONLINE WITH**

**GO  FAN<sup>®</sup>**





# WILMOT UNION HIGH SCHOOL

## **Board of Education - Calendar:**

<https://www.wilmothighschool.com/WUHS%20Board%20Calendar%202526.pdf>

## **Newsletter Email & SMS List:**

<https://docs.google.com/forms/d/e/1FAIpQLSfP6W4NQCzyg4OdRT60MXWjPrSOXiCwcxyrt8CT2MNI4mgU0A/viewform>

## **Lunch Menu:**

<http://www.wilmothighschool.com/Wilmot%20December%202025.pdf>

## **Community Referendum Construction Updates:**

<https://www.wilmothighschool.com/district/community-referendum-.cfm>

## **WARP Schedule:**

[https://docs.google.com/document/d/1XZuNhbt5Iii4RjkwPs9OEKO6w1lI9cHx\\_wnEMJ4Ejas/edit?tab=t.0](https://docs.google.com/document/d/1XZuNhbt5Iii4RjkwPs9OEKO6w1lI9cHx_wnEMJ4Ejas/edit?tab=t.0)

## **OTUS:**

- [Video 1: How to create an Otus Account](#)
- [Video 2: How to navigate the Otus Platform as a Parent](#)
- [Video 3: Formatives and Summatives at Wilmot](#)
- [Video 4: How to read the Otus Gradebook](#)

## **WSPEI Workshop:**

<https://docs.google.com/forms/d/e/1FAIpQLSfCrpfTXu34q8-7s8RN8NVBUbqX4y8tOG-Jl8x-A52H8DO0EQ/viewform>

## **Scholarship Bulletin:**

[https://docs.google.com/spreadsheets/d/1dmwk07fIDPonw\\_AMGXxS27J88qb\\_ZsDveEhnv7huayk/edit?gid=724439301#gid=724439301](https://docs.google.com/spreadsheets/d/1dmwk07fIDPonw_AMGXxS27J88qb_ZsDveEhnv7huayk/edit?gid=724439301#gid=724439301)

## **Sports Physical:**

<https://www.wiaawi.org/Portals/0/PDF/Forms/PPE-form.pdf>

## **Athletic Registration:**

<https://students.arbitersports.com/programs/athletic-registration-2025-2026-17>

## **CareSolace:**

<https://caresolace.com/site/wilmot>

## **Staff Appreciation:**

[https://docs.google.com/forms/d/e/1FAIpQLSf45d5rVaDgSnHOp4Py\\_tFfTWXhbpNk2yOtJO2nteK46TKQdw/viewform](https://docs.google.com/forms/d/e/1FAIpQLSf45d5rVaDgSnHOp4Py_tFfTWXhbpNk2yOtJO2nteK46TKQdw/viewform)

## **Facebook:**

<https://www.facebook.com/wilmotuhs>

## **Instagram:**

<https://www.instagram.com/wilmotuhs/>

## **X (Twitter):**

<https://twitter.com/wilmotuhs>

## **Fitness Center Membership:**

<https://www.wilmothighschool.com/district/fitness-center.cfm>

## **Fitness Center Classes:**

[https://wilmothighschool.cr3.rschooltoday.com/public/getclass/catalog\\_id/-1/program\\_id/6](https://wilmothighschool.cr3.rschooltoday.com/public/getclass/catalog_id/-1/program_id/6)

## **Community Outreach - Class Registration:**

<https://wilmothighschool.cr3.rschooltoday.com/public/home/>

## **Caleb Durbin's Youth Baseball Camp:**

[https://wilmothighschool.cr3.rschooltoday.com/public/getclass/catalog\\_id/-1/program\\_id/8](https://wilmothighschool.cr3.rschooltoday.com/public/getclass/catalog_id/-1/program_id/8)

## **GoFan:**

<https://gofan.co/app/school/WI19522>

## **ADDITIONAL LINKS:**

### **Athletics Calendar:**

<https://southernlakesconference.org/public/genie/86/school/1/>

### **School Calendar:**

<https://www.wilmothighschool.com/about/calendars.cfm>

### **Parent Panther Newsletter:**

[https://docs.google.com/document/d/1YMYIADrcr\\_tUcBFbaNahyJcM5Zjpf7T9ssXNU6OaKOk/edit](https://docs.google.com/document/d/1YMYIADrcr_tUcBFbaNahyJcM5Zjpf7T9ssXNU6OaKOk/edit)

### **WUHS Newsletter:**

<https://www.wilmothighschool.com/wilmot-updates.cfm>

**Back to Top**